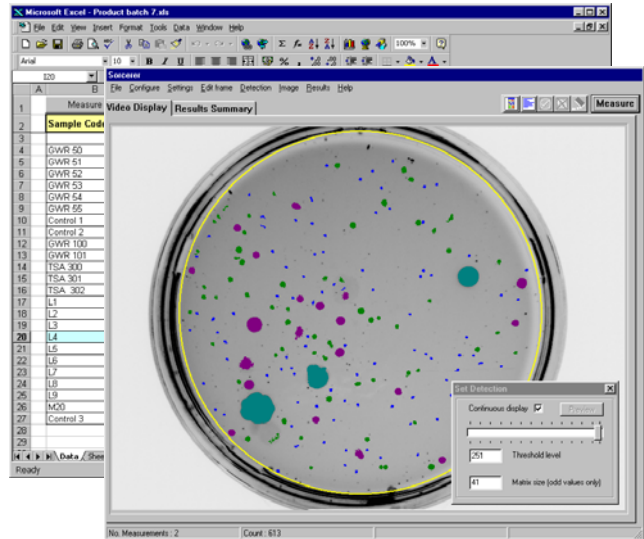


# SORCERER

## Elispot Assay Analysis

### Features

- The Sorcerer Elispot Image Analysis system automates Elispot, Colony or other object counting in 6, 12, 24, 48 and 96 well Microtiter plates.
- A digital stepping motor driven sample stage and controller integrated with Sorcerer enables rapid counting of spots in all required plate wells.
- A fiber optic ring light provides even illumination for each well.
- A special detection algorithm detects spots consistently across the well regardless of irregular optical properties of the plate.
- Touching spots can be automatically separated for an accurate spot count.
- In semi-automatic mode, Sorcerer's Image Editor can eliminate artifacts in the current well before measurement.
- Count data for each well are immediately displayed within the Sorcerer program as well as being transmitted to a Microsoft Excel spreadsheet for further analysis, printing and file saving.
- Additional measured data available within the Excel spreadsheet:
  - Size distribution by spot Area, Diameter or Shape.
  - Individual spot Area, Diameter and Shape values.
  - Total spot Area / well.
  - Area Fraction of spots / well.



### Operation

During initial setup, the automatic stage is programmed to step through the required number of plate wells.

For example:

Rows A to H, columns 1 to 12 in a 96 well plate, or  
Rows A to D, columns 1 to 12 in a 96 well plate, or  
Rows A to H, columns 1 to 8 in a 96 well plate.

These data and other program parameters are saved in a configuration file for later use.

The plate to be counted is placed on the auto stage, and a single click starts the programmed sequence.

Each well is counted in approximately 1 second, and data from each well are transmitted to the spreadsheet.

After the plate has been scanned, the auto stage returns to its Home position in preparation for the next plate.

See Sorcerer data sheet for full specifications.

# Optomax

*Image Analysis Products for Science & Industry*

9 Ash Street, P.O. Box 840, Hollis, NH 03049, USA.

Tel: (603) 465 3385 FAX: (603) 465 2291 email: optomax@msn.com